



SIMATIC S7-1200, DCM 1271,
DATA DECOUPLING MODULE,
FOR AS-I MASTER CM 1243-2 IN: DC 24 V / 30 V OUT: 1 X
AS-I,
4 A INTEGR. OVERLOAD PROTECTION,
INTEGR. EARTH FAULT DETECTION,
SIGNALING CONTACT

General technical data:

product brand name		AS-Interface
Protection class IP		IP20
Installation altitude / at a height over sea level / maximum	m	2,000
Ambient temperature		
• during operating	°C	0 ... 55
• during storage	°C	-40 ... +70
Relative humidity / at 25 °C / during operating / maximum	%	95
Item designation / according to DIN 40719 extendable after IEC 204-2 / according to IEC 750		A
Item designation / according to DIN EN 61346-2		A
Active power supplied	W	120
Product function		
• self-reset		Yes
• reset external		No
• manual RESET		No
• short-circuit to earth recognition		Yes
• test function of signaling contacts		No
• adapted for grounded AS-i networks		Yes
• adapted for non-grounded AS-i networks		Yes
• adapted for AS-i Power24V		Yes

• sequential connected time-delay		No
• AS-interface data decoupling		Yes
Reset function		No
Adjustable response current		
• of the current-dependent overload release	A	4 ... 4
Number of electrical connections / for alarm contact		3
Number of outputs / for AS Interface / maximum		1
Type of display / as status display by LED		EFD, ASI OL, DIAG
Design of the switching contact / as make contact / for reporting function		No

Communication:

Protocol / will be supported / AS interface protocol		Yes
---	--	-----

Auxiliary circuit:

Operating current / of the auxiliary contacts		
• at DC-13 / at 24 V	A	0.05

Ein- und Ausgänge:

Type of voltage		
• of the input voltage		DC
• of the input voltage		DC
Characteristic feature of the output / short-circuit protected		Yes
Output voltage		
• 1 / for DC / rated value	V	30
• 1 / for DC		
• rated value	V	20.5 ... 31.6
• 2 / for DC / rated value	V	24
Output current / for DC / maximum	A	4
Input voltage		
• 1 / for DC / rated value	V	30
• 1 / for DC		
• rated value	V	21 ... 32
• 2 / for DC / rated value	V	24
Input current / for DC / maximum	A	4.1

Short-circuit:

Design of the short-circuit protection		electronic
---	--	------------

Einbau/Befestigung/Abmessungen:

Built in orientation		vertical, horizontal
-----------------------------	--	----------------------

Type of mounting		35-mm DIN rail mounting or wall mounting with plug-in flaps
Width	mm	30
Height	mm	100
Depth	mm	75
Design of the electrical connection / for auxiliary and control current circuit		screw-type terminals
Product function / removable terminal for auxiliary and control circuit		Yes
Type of the connectable conductor cross-section <ul style="list-style-type: none"> • for auxiliary contacts <ul style="list-style-type: none"> • solid • finely stranded <ul style="list-style-type: none"> • with conductor end processing • for AWG conductors / for auxiliary contacts 		3x (0.2 ... 3.3 mm ²) 3x (0.2 ... 3.3 mm ²) 3x (24 ... 16)
Verification of suitability		CE / cULus / FM / ATEX
Acceptability for application / safety-related circuits		No

Certificates/approvals:

Further information:

Information- and Downloadcenter (Catalogs, Brochures,...)

<http://www.siemens.com/industrial-controls/catalogs>

Industry Mall (Online ordering system)

<http://www.siemens.com/industrial-controls/mall>

Cax online generator:

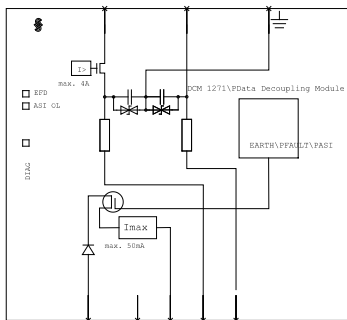
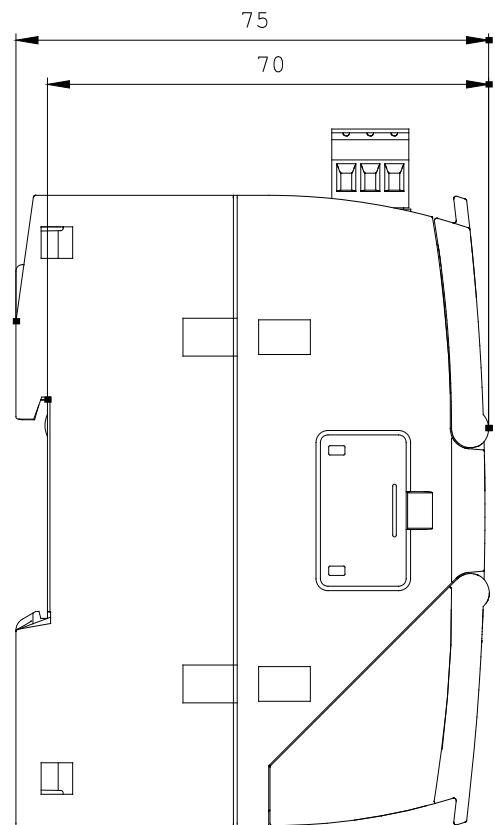
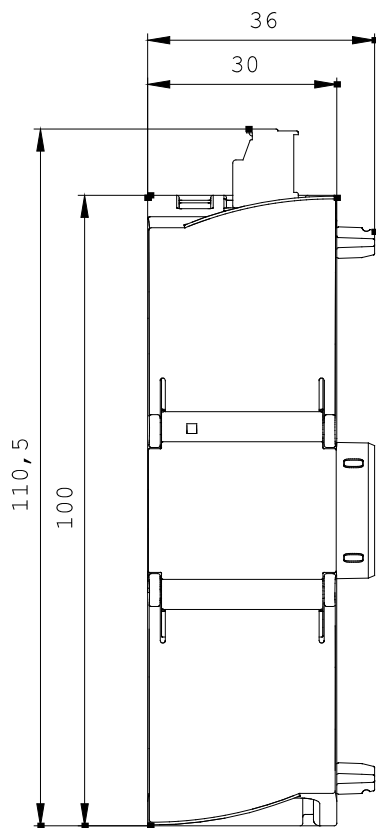
<http://www.siemens.com/cax>

Service&Support (Manuals, Certificates, Characteristics, FAQs,...)

<http://support.automation.siemens.com/WW/view/en/3RK7271-1AA30-0AA0/all>

Image database (product images, 2D dimension drawings, 3D models, device circuit diagrams, ...)

http://www.automation.siemens.com/bilddb/cax_en.aspx?mlfb=3RK7271-1AA30-0AA0



last change:

Mar 29, 2012