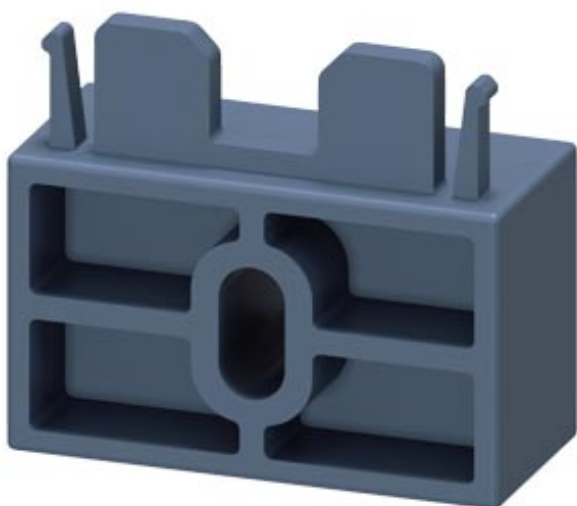


Additional mounting base unit for ET 200SP motor starter Bag containing 5 units








Product category	Accessories
Product designation	Mechanical bracket
Design of the product	Mechanical, for ET 200SP
Product type designation	Mechanical additional fastening for BaseUnit

General technical data	
Product function	Zubehör
Degree of pollution	2
Protection class IP	IP20
Shock resistance	6g / 11 ms
Vibration resistance	15 mm to 6 Hz; 2g to 500 Hz

Installation/ mounting/ dimensions	
Mounting position	vertical, horizontal, flat
Mounting type	pluggable on BaseUnit
Height	26 mm
Width	30 mm
Depth	14 mm

Certificates/ approvals	
-------------------------	--

General Product Approval			EMC	Declaration of Conformity	
 CSA	 UL		 RCM	 EG-Konf.	Miscellaneous

Test Certificates	Marine / Shipping				other
Type Test Certificates/Test Report	 ABS	 BUREAU VERITAS	 LRS	 DNVGL.COM/AF	Confirmation

Further information

Information- and Downloadcenter (Catalogs, Brochures,...)

www.siemens.com/ic10

Industry Mall (Online ordering system)

<https://mall.industry.siemens.com/mall/en/en/Catalog/product?mlfb=3RK1908-1EA00-1BP0>

Cax online generator

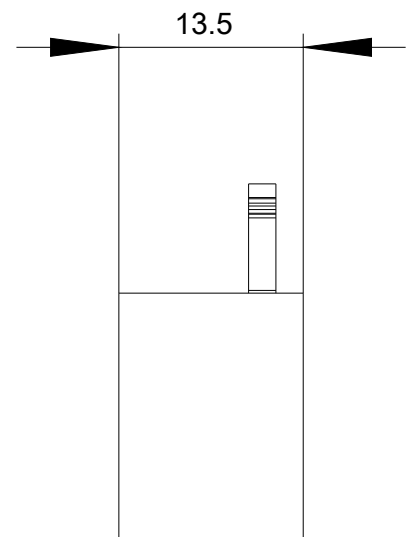
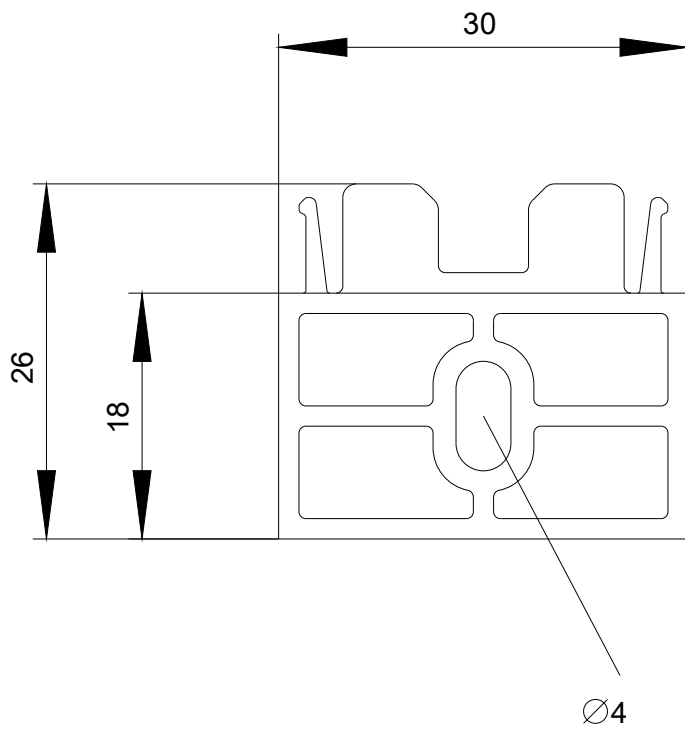
<http://support.automation.siemens.com/WW/CAXorder/default.aspx?lang=en&mlfb=3RK1908-1EA00-1BP0>

Service&Support (Manuals, Certificates, Characteristics, FAQs,...)

<https://support.industry.siemens.com/cs/ww/en/ps/3RK1908-1EA00-1BP0>

Image database (product images, 2D dimension drawings, 3D models, device circuit diagrams, EPLAN macros, ...)

http://www.automation.siemens.com/bilddb/cax_de.aspx?mlfb=3RK1908-1EA00-1BP0&lang=en



last modified:

03/10/2020